



**MICHIGAN ECONOMIC  
DEVELOPMENT CORPORATION**



MICHIGAN DEPARTMENT OF  
ENVIRONMENT, GREAT LAKES, AND ENERGY

# **BROWNFIELD REDEVELOPMENT AUTHORITIES EDUCATIONAL WEBINAR**

---

**PUBLIC ACT 381**

**April 20, 2023**

# AGENDA



**EGLE  
QUICK  
REMINDERS**

**NEW EGLE  
TEAM MEMBERS**

**EGLE QUARTERLY  
NEWSLETTER**

**BROWNFIELD TIF  
PROCESS & CHECKLIST**

**Q&A  
SESSION**



MICHIGAN DEPARTMENT OF  
ENVIRONMENT, GREAT LAKES, AND ENERGY

# EGLE Brownfield Program Updates

---

JANET MICHALUK AND DAN GOUGH, RRD-BARS

MICHALUKJ@MICHIGAN.GOV AND GOUGH1@MICHIGAN.GOV

517-643-0314 AND 517-281-8253

# Contents

---

- Quick Reminders
- New Brownfield Staff
- Quarterly Newsletter





# Quick Reminders

---



**August 8-11 | Detroit**

Register today!

---

## **Brownfield Grant and Loan Funding**

- Available fiscal year 2023 funding: \$6M Grant & \$4M Loan
  - Proposals: Accepted year round
  - Timing for this fiscal years funding
- 

## **2023 Internal Revenue Service (IRS) Mileage Rate**

- Current rate effective until December 31, 2023: 65.5 cents per mile



# New Brownfield Staff

---

AssmannA@Michigan.gov | 616-430-5275

Aaron joined the Brownfield Redevelopment Unit in 2022 as the Brownfield Coordinator for the Cadillac District which includes Benzie, Grand Traverse, Kalkaska, Lake, Leelanau, Manistee, Mason, Missaukee, Osceola, and Wexford counties. He joined EGLE's Remediation and Redevelopment Division in 2017 as a Field Operations Analyst. Before working with EGLE, Aaron lived in Anchorage, Alaska working in oil and gas with BP Alaska as an environmental compliance advisor. While earning his education, he also worked as a seasonal Biological Technician at Sleeping Bear Dunes National Lakeshore. Aaron holds a B.S. in Biology from Alma College and a M.S. in Conservation Biology from the University of Michigan.

## Aaron Assmann

Brownfield Coordinator  
Cadillac District



# Ari McKeever

Brownfield Coordinator  
Detroit District

(Wayne County, except Detroit)



McKeeverA1@Michigan.gov | 517-388-4515

Ari started his environmental career as a consultant in 2012 working on large industrial demolition sites and then as an emergency responder for CSX railroad. He joined EGLE's Geological Services Section in 2017 before becoming a Part 213 project manager in the Detroit District for two years. Ari earned a B.S. in Geology from Wayne State University. He also field camped with the University of Missouri at Camp Branson in Wyoming with a focus on hard rock and hydro geology.



# Jolene Melchiori

Michigan State Housing  
Development Authority  
(MSHDA)  
Redevelopment Specialist



MelchioriJ@Michigan.gov | 906-250-2076

Jolene is the statewide MSHDA Redevelopment Specialist for the Division and serves as the EGLE point of contact for MSHDA redevelopment projects. Before taking this position, she worked as a Marquette District Project Manager for the Part 213 and Part 201 programs and spent 9 years as an environmental consultant. She has a diverse background in due diligence, site investigation and characterization, project management, and collaboration with private, public, and regulatory stakeholders. Jolene is a licensed professional geologist and holds a B.S. in Geoscience from Winona State University and an M.S. in Geology from the University of Wisconsin-Milwaukee.

# Jay Eichberger

MSHDA Brownfield  
Coordinator



EichbergerJ@Michigan.gov | 616-446-4043

Jay joined EGLE in 2018 as an Environmental Quality Analyst in the Grand Rapids District Office. He's managed Part 201 and Part 213 projects, lead the Vapor Intrusion Technical and Program Support team since 2019, and worked with the Interstate Technology and Regulatory Council's Vapor Intrusion Mitigation Team. He moved to the Brownfield Assessment and Redevelopment Section in February to become the MSHDA Brownfield Coordinator as part of the MSHDA Review Team. Jay has a B.S. in Environmental Science from Kutztown University in Pennsylvania.

# Jeff Proctor

Communications  
Representative



ProctorJ2@Michigan.gov | 517-648-0709

Jeff is the Communications Representative for the Remediation and Redevelopment Division. Before joining EGLE in January of 2023, he spent 25 years in Lansing television news, serving as Assignment Manager and Producer at WLAJ, as a Producer at WSYM, and as Executive Producer at WILX where he was part of a team that was twice named the Michigan Association of Broadcasters Station of the Year. He graduated from St. Joseph's College with a B.S. in Mass Communications.

# Interactive Brownfield Program Contacts Map

<https://www.michigan.gov/eglebrownfields>

About Us ▾ For the Public ▾ Regulatory Assistance ▾ Maps and Data ▾ Newsroom Outreach ▾ FAQs Contact Us ▾

## Brownfield Redevelopment

EGLE

Home > About Us > Divisions and Offices > Remediation and Redevelopment > Brownfields

Brownfield properties are those in which the redevelopment or reuse of the property may be complicated by the presence or perception of contamination.

Revitalizing and redeveloping these properties protects the environment, reuses existing infrastructure, minimizes urban sprawl and creates economic opportunities.

Our [Remediation and Redevelopment Division](#) (RRD) provides assistance including grants, loans, tax increment financing and free environmental site assessments to facilitate the redevelopment of brownfield properties.

### Contact

[Interactive Brownfield Program Contacts Map](#)

[Downloadable Brownfield Coordinator Map](#)



# Quarterly Newsletter

---

[WWW.MICHIGAN.GOV/EGLE](http://WWW.MICHIGAN.GOV/EGLE)

**EGLE**

# Quarterly Newsletter

Example








April 2023

Welcome to your quarterly look at what's going on in the Brownfield Program at the Michigan Department of Environment, Great Lakes, and Energy.

- [Staff Spotlight](#)
- [EGLE Brownfield Grants and Loans Update](#)
- [EGLE Brownfield Site Assessment Update](#)
- [Program Help](#)
- [U.S. EPA Grant Funding Awards](#)
- [Brownfields 2023](#)
- [Project Spotlight: Capital City Market, Lansing](#)

# Sign up today!

[www.Michigan.gov/EGLE](http://www.Michigan.gov/EGLE)

Follow us     

# EGLE

Sign up for updates on a variety of environmental topics

Submit

**About Us**

Working side-by-side with partners at local, regional, state and federal levels, the Michigan Department of Environment, Great Lakes, and Energy (EGLE) safeguards our state's environment while supporting the economic growth and development crucial for Michigan's future.

**Job Openings**

Our job is hard, but our mission is simple: to protect Michigan's environment and public health by managing air, water, land, and energy resources. If you are looking to make a difference and be part of something greater, apply TODAY!

Search Open EGLE Positions



MICHIGAN DEPARTMENT OF  
ENVIRONMENT, GREAT LAKES, AND ENERGY

JANET MICHALUK, BROWNFIELD COORDINATOR

| 517-643-0314

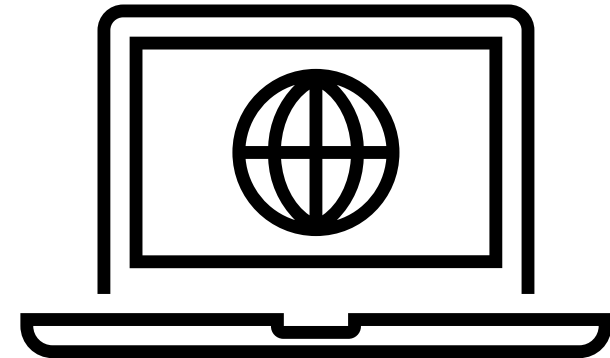
DAN GOUGH, BROWNFIELD COORDINATOR

| 517-281-8253

800-662-9278 | [www.Michigan.gov/EGLE](http://www.Michigan.gov/EGLE)



**BROWNFIELD  
TAX INCREMENT  
FINANCING  
PROCESS AND  
CHECKLIST**



# Q & A SESSION

# THANK YOU

---

**Additional questions? Contact us today.**

MEDC: Rob Garza, [garzar8@michigan.org](mailto:garzar8@michigan.org)  
EGLE: Dan Gough, [goughd1@michigan.gov](mailto:goughd1@michigan.gov)

**Next Webinar: July 19, 1-2:30 p.m.**